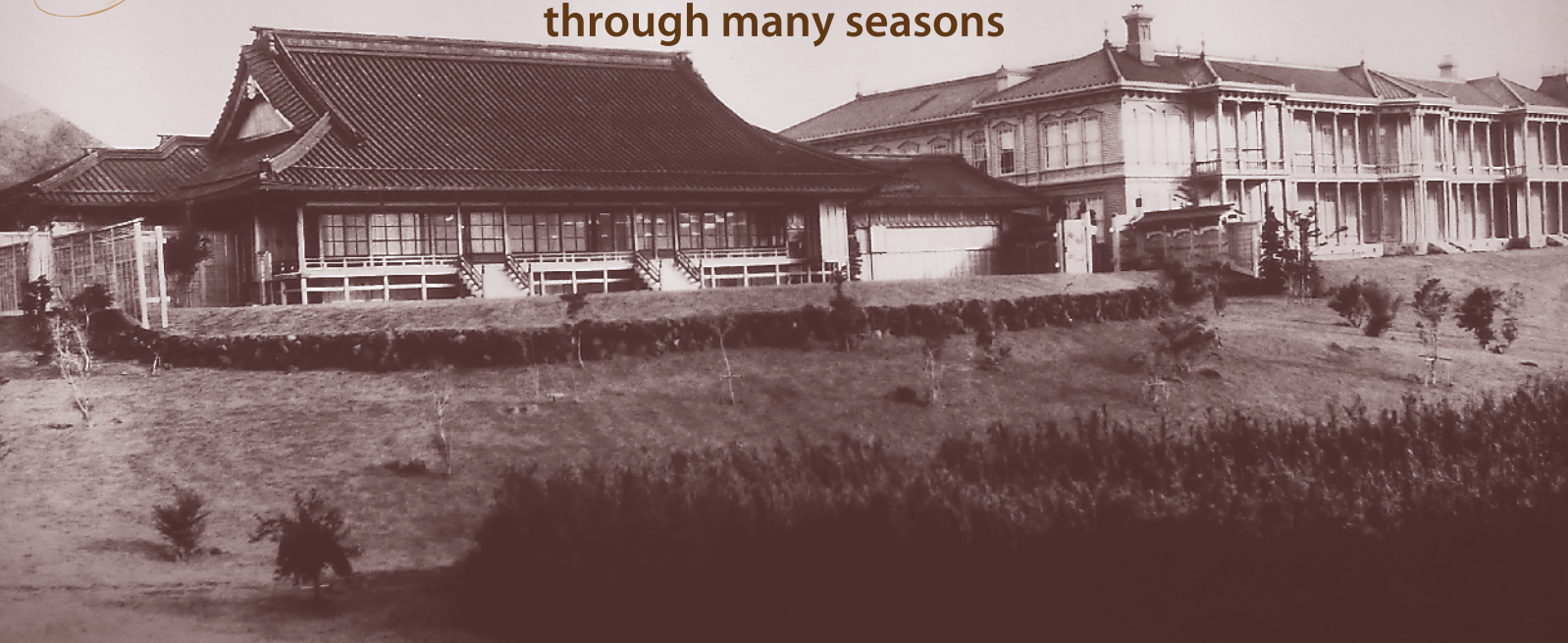


Hakone Palace and Onshi-Hakone Park

Beginning with Meiji this land inherits its fame
through many seasons

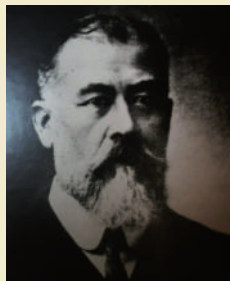


ONSHI-HAKONE PARK

Plans for construction of Hakone Palace

The designs for Hakone Palace began in 1884 with the concept of building a palace to serve as a place for summer retreat and place of isolation for the Imperial Family.

Dr. Erwin Bälz was a German physician that suggested the palace be located at Hakone's Togashima. His work focused on the importance of preventive medicine and his research and studies focused on Hakone and other areas known for health resorts and hot springs in Japan. The plans to construct this palace at Hakone are said to have begun with a proposal based on a suggestion by Dr. Bälz when Hirobumi Ito was the Minister for the Imperial Household.



A memorial statue to Dr. Bälz is found in the park because of his connection to the Hakone Hot Springs.

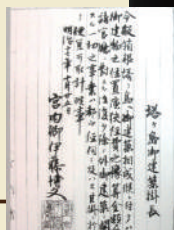
To the Chief Architect at Togashima

With regards to the construction of the Hakone Togashima Palace, please endeavor at your convenience with regards to all items in connected with the project of construction as the person in charge of the construction, excluding the position, scale and cost of the building, as well as that which will reciprocate to the related agencies and departments.

October 25, Meiji 17 (1884)

Minister of the Imperial Household, ITO Hirobumi [seal]

The letter to begin construction sent to the chief architect by Hirobumi Ito. (Rewritten to modern wording)



Changes to the Palace Structures

Construction of the Occidental Hall, Japanese Hall and the associated buildings given below that make up the Hakone Palace was completed on July 31, 1886. The total cost is said to about 300,000 yen. (The national budget in those days was about 80 million yen).

The Great Kanto Earthquake of 1923 inflicted damage to the buildings so that the two-story Occidental Hall building was completely removed and the Japanese Hall was reduced to about half its former size.

Later, suffering damage in the North Izu Earthquake of 1930 the Japanese Hall was left only partially usable reducing it to approximately 1/7 of the size at initial construction.

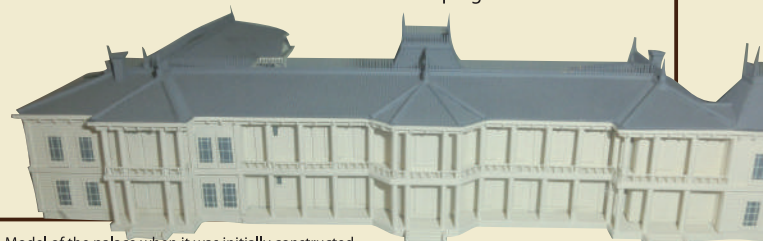
The grounds were given as a gift to Kanagawa Prefecture in 1945 and were opened to the public from the following year as

Onshi-Hakone Park, with parking lots, viewing platforms and other park features added over time.

The park was registered as a National Registered Monument in 2013 as a place of scenic beauty that contributed to the development of modern landscaping culture.



The Japanese Hall after the North Izu Earthquake



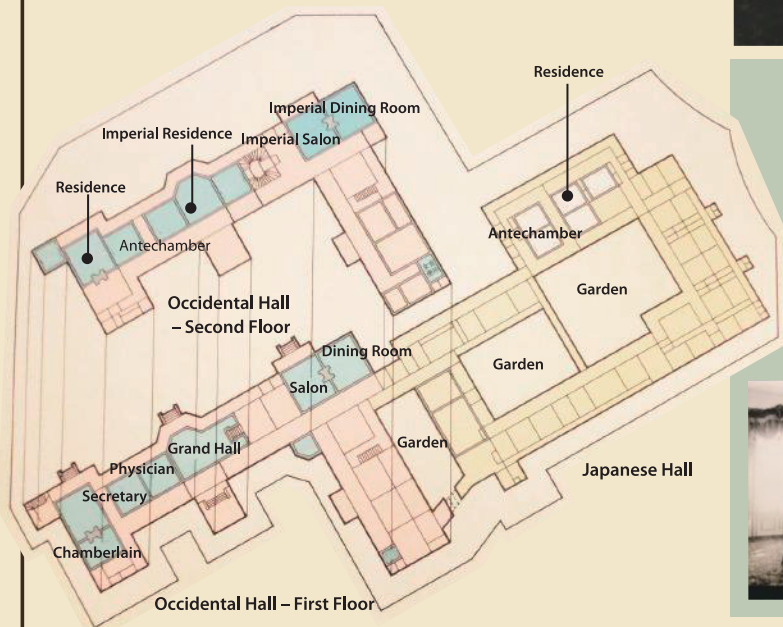
Model of the palace when it was initially constructed



Inside Hakone Palace

The Occidental Hall had imperial residences featuring balconies that faced the lake, a large dining room and salon. There was a grand hall in the central entrance area decorated with rugs, chandeliers and mirrors and has been used to entertain guests of honor.

The gardens surrounded by the Japanese Hall are an example of the kairo style and there was once an imperial residence here as well with a view of the lake.



Interior of the Occidental Hall



Sanjo Gate and the Occidental Hall

Interior of the Japanese Hall



Guest of Hakone

Hakone Palace was not only a summer retreat and place of relaxation, but also was used to host famous guests from around the world.

These guests included a visit in 1922 from Prince Edward from the United Kingdom who is said to have had a long-held admiration for the town of Hakone.



Hakone Palace in Picture Postcards



Panoramic view of Hakone-juku and Hakone Palace



Hakone Palace seen from the Tokaido route
(Today the site of a parking lot)

Managed by:

Kanagawa Prefectural Park Association and LAND FLORA Corporation

Prefectural Onshi-Hakone Park Management Office (Inside the Lakeside Panorama Hall)

Tel. 0460-83-7484 171 Motohakone, Hakonemachi, Achigarashimo-gun

Kanagawa Prefecture Kensei Civil Engineering Office

Odawara Civil Engineering Center Roads and Cities Section

Tel. 0465-34-4141 (Rep.) 5-2-58 Higashicho, Odawara City